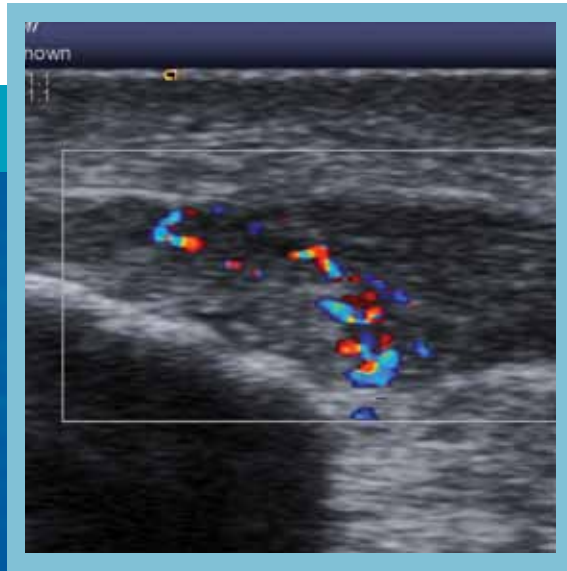
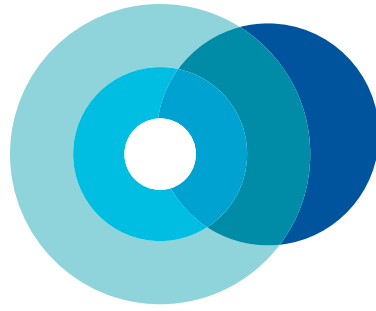


ASMI
AUSTRALIAN SCHOOL OF MEDICAL IMAGING



*Advanced Musculoskeletal
Ultrasound for Radiologists*

**INTENSIVE 2 DAY SEMINARS FOCUSED ON
ADVANCED “HANDS ON ” ULTRASOUND SKILLS SPECIFICALLY FOR RADIOLOGISTS**

**Auckland and Sydney
Max 8 registrants per seminar**

THE AUSTRALIAN SCHOOL OF MEDICAL IMAGING

T: (02) 9482 8711 | F: (02) 9987 2479 | E: admin@asmi.edu.au | www.asmi.edu.au



Stephen Bird is currently employed as the Charge Sonographer at Benson Radiology in Adelaide and is the Director of the ASMI Musculoskeletal Sonography Program.

Stephen began sonography in 1990, holds a General and a Vascular DMU and a Masters of Medical Sonography from the University of South Australia.

STEPHEN BIRD AMS, DMU, DMU (Vascular).

Stephen has been a member of the ASUM Federal Council, ASA Federal Council, Chairman of ASAR and Chairman of the DMU Board of Examiners.

Stephen was the recipient of the 2002 ASA Sonographer Achievement Award and in 2008 was made an Honorary Fellow of ASUM.

His clinical practice case mix is that of a general and vascular examinations. He has a special interest in vascular, small parts and musculoskeletal ultrasound and has published and presented in Australia and internationally numerous papers on these topics.

This seminar is for Radiologists who want an update in advanced MSK scanning and interpretation skills by internationally renowned Sonographer Mr Stephen Bird.

The seminar is focused on delivering real outcomes in practical techniques with the majority of the seminar involving hands on scanning of patient models. You will be able to interact with Stephen in a small group atmosphere to discuss technique and clinical points of discussion on a personal basis.

The curriculum includes:

- Upper and lower limb
- Sonographical anatomical anatomy and normal variants
- Comprehensive range of exam specific normal appearances
- Comprehensive range of exam specific pathological appearances
- Patterns of pathology
- Sonographic technique tips
- Practical image optimization tips
- Diagnostic pitfalls

Sydney

Venue: ASMI campus, Hornsby
Date: Sat 5th Dec & Sun 6th Dec 2009
Fees: AUD\$1,650.00 (+ GST if applicable)

Auckland

Venue: Starship Room, Clinical education Centre
Auckland City Hospital
Date: Sat 10th Oct & Sun 11th Oct 2009
Fees: AUD\$1,650.00 (+ GST if applicable)

For further information please contact ASMI on:

Email: seminars@ASMI.edu.au | Web: www.asmi.edu.au | Phone: +61 2 9482 8711 | Fax: +61 2 9987 2479